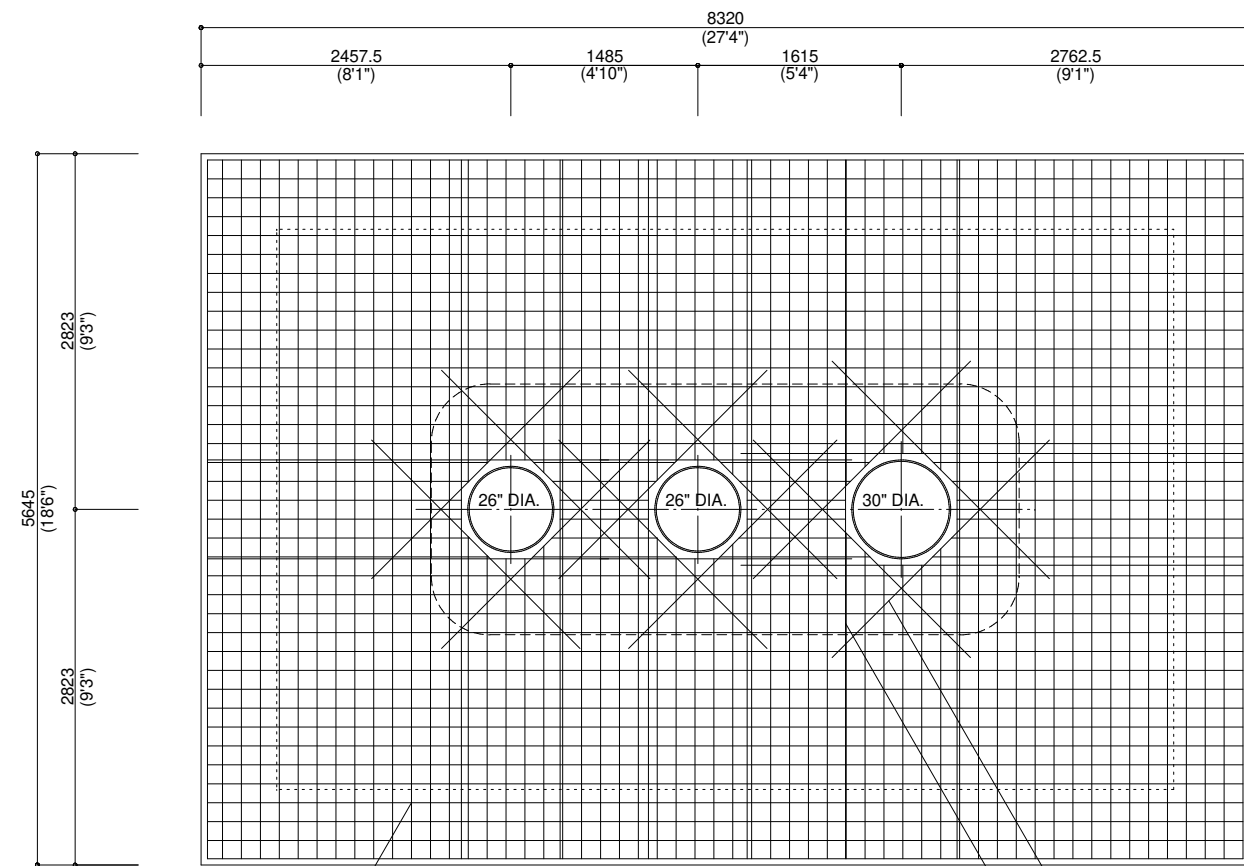


#4@12" O.C. EACH WAY

PROVIDE ADDITIONAL #4 BAR EACH SIDE OF OPENING TO WITHIN 2" FROM EDGE OF EACH OPENING, TYP.

#4x6'-0" @ 45 ANGLE; TYPICAL 4 PLACES, CENTERED AROUND EACH OPENING.

TOP SLAB: TOP REINFORCING

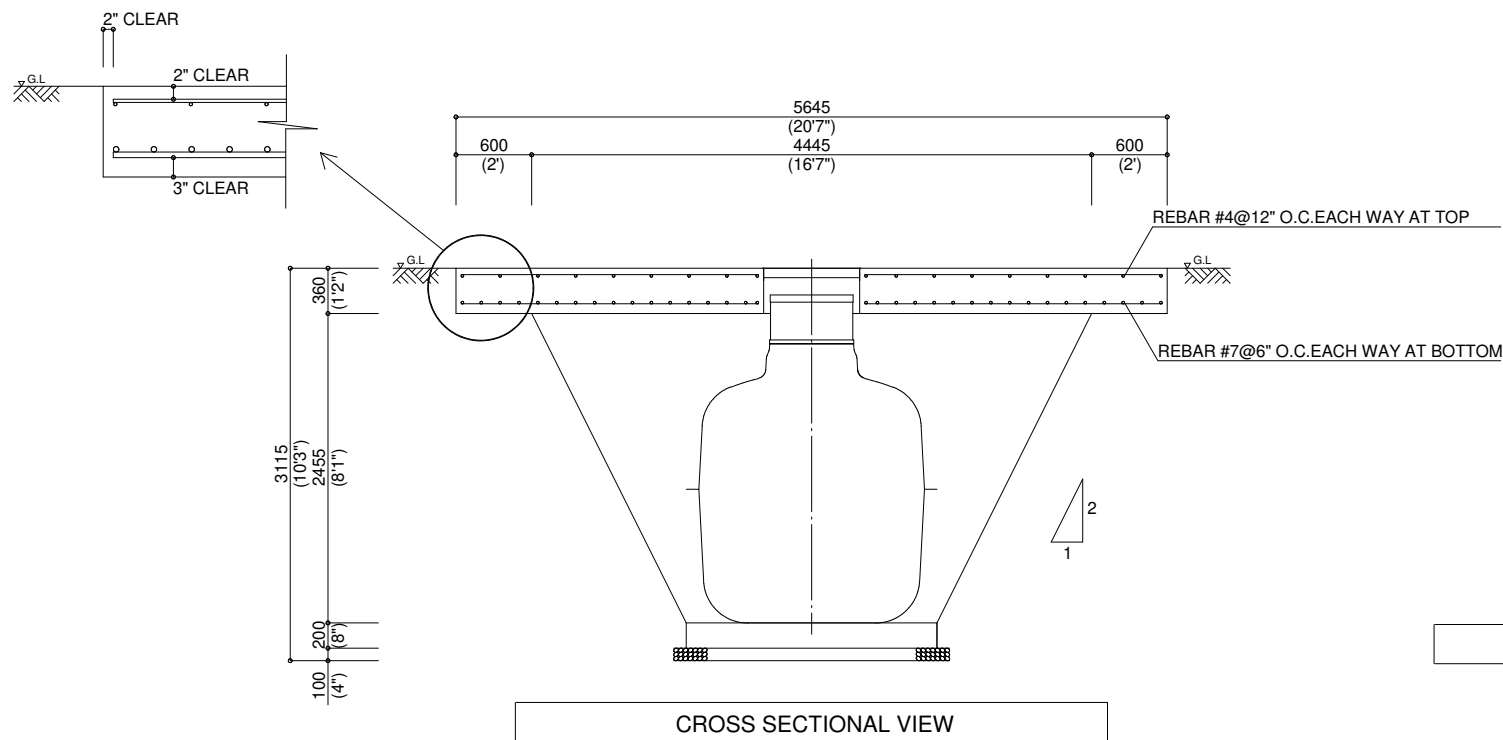


#7@6" O.C. EACH WAY

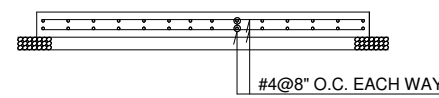
PROVIDE ADDITIONAL #7 BAR EACH SIDE OF OPENING TO WITHIN 2" FROM EDGE OF EACH OPENING, TYP.

#7x8'-0" @ 45 ANGLE; TYPICAL 4 PLACES, CENTERED AROUND EACH OPENING.

TOP SLAB: BOTTOM REINFORCING



CROSS SECTIONAL VIEW



REFERENCE OF REBAR ARRANGEMENT (BASE)

GJS\*\*\*  
 SPECIFICATIONS  
 CONCRETE STRENGTH: F<sub>c</sub>= 4500PSI, MIN.  
 STEEL WIRE : ASTM A615, GRADE 60 NEW DEFORMED BARS.  
 ANCHORAGE LENGTH : 40d, MIN.  
 FOUNDATION: 4", MIN. #57 STONE.

\*1 G.L. IN THE DRAWING INDICATES FINISH GRADE (MANHOLE LID).  
 \*2 TOP LOAD IS DESIGNED FOR H20.

**FUJICLEAN CEN21**

SCALE:  
1:60  
DATE:  
04/13/2020  
DRAWN BY:  
MIYANO

