

November 7, 2018

Bryan McGowin
Advanced Wastewater Solutions
PO Box 1622
Southampton NY 11969

Dear Sir:

Subject: Fuji Clean CEN-Series Influent Requirements

The question has arisen as to whether double wye and double 45° bends are allowed upstream of Fuji Clean CEN-Series models. We have reviewed the question and concluded that either piping configuration is acceptable so long as the configuration conforms with applicable sanitary and/or plumbing codes.

Figure 1 is an example of a double 45° fitting. Pipe configurations like this are common, particularly in retrofits. Fuji Clean has no objection to this configuration as long as applicable plumbing and sanitary codes are followed.

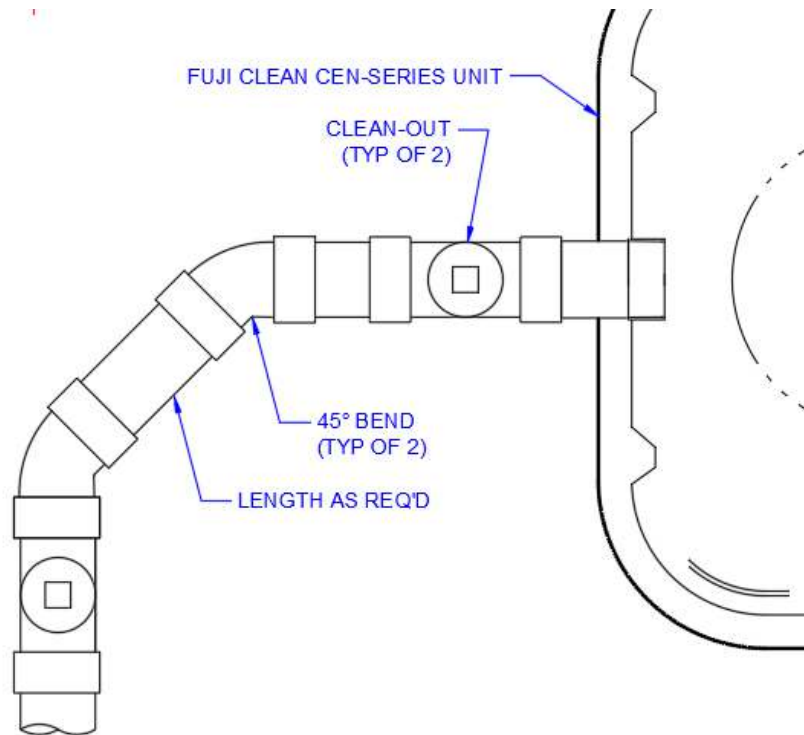


Figure 1—Double 45° Piping

In a similar vein, Figure 2 is an example of a double wye. As noted, Fuji Clean has no objection to a double wye configuration so long as the applicable rules are followed.

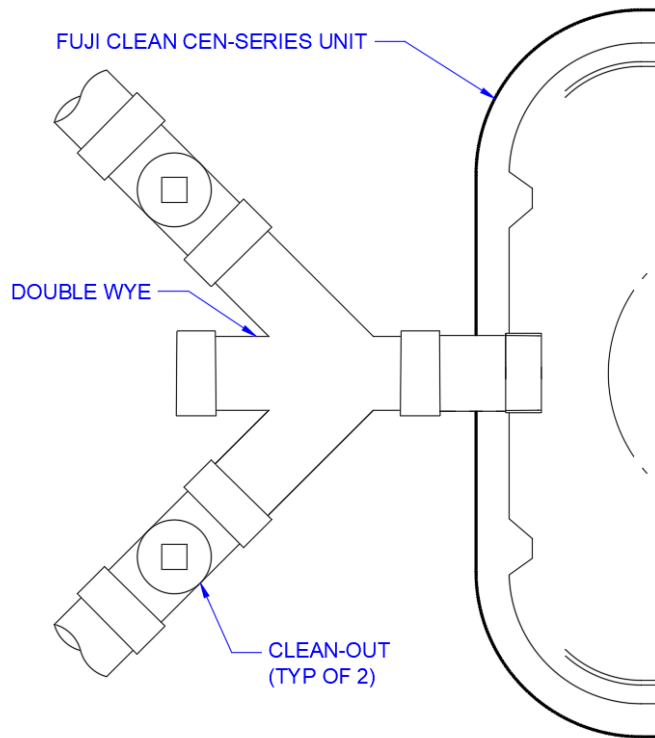


Figure 2—Double Wye Piping

Please feel free to call or email if you have additional questions, concerns, or issues.

Thank you.

Sincerely,

Scott Samuelson
Managing Director